

Two special nurses tick over 25 years

When nurses Edith Grace and Colette Elston began work at Hospice South Canterbury in 1998 they didn't know if they would have a job by the end of the year.

The precarious nature of the organisation as it launched into its next stage of development was such that the board and management could not guarantee the longevity of any job.

A small government contract had been secured the year before but 1998 was the year hospice's first inpatient unit was opened, in Broadway Avenue.

Enrolled Nurse Edith and Health Care Assistant Colette were there for that opening, and they survived the year. And the next one, and the one after that ...

This August then saw them tick over a remarkable 25 years of service each, the longest serving staff hospice has had.

A function was held to mark the occasion and while both these special people tend to shy away from any limelight they were soon regaling present-day staff of how things were in the good-old days. Photo albums were pulled out and memories rekindled.

They also spoke of the privilege it was to nurse patients through all those years.

Certainly they have seen the organisation evolve, and while difficult to know how many patients and families these two have supported, it is in the thousands.

For what is a challenging job, the longevity these two have shown, and their continued value to hospice today, is amazing.

A huge thanks and well done to two very special people.



Edith (left) and Colette at the afternoon tea held to recognise their 25 years' service.

Fun fact: When Alan Munro and Neisha Hogg negotiated Hospice South Canterbury's first funding contract in 1997 the wage bill was \$31,000. In the financial year just gone it was \$2,214,000.

Go on holiday, visit some hospices

Our counsellor Catherine Richardson and her husband Brent visited the UK and Europe earlier this year, and while there she popped into two hospices in England.

She writes: The two hospices I visited were the Arthur Rank Hospice Charity (an adult hospice serving more than 4100 patients a year) and the East Anglia Children's Hospice Milton (one of three children's Hospices in East Anglia). EACH Milton supports approximately 150 children in the Cambridge area.

Arthur Rank is a new facility on the edge of Cambridge. I was struck by simple touches of beauty – seasonal knitted flowers along walkways and lots of bird feeders. When building they thought 'how can we make this a community useful space as well'.



Catherine and Brent, punting on the Cam in Cambridge.

To this end, they have a commercially run cafe, sanctuary, hair salon, meeting rooms of adjustable size, a gym and an outside studio for craft sessions or talks. The 23-bed facility receives approximately 30% of their funding from the NHS (we receive 50% from our government). I met with the lead psychologist and the music therapist focusing on "Living Well" their extensive day service, and what counselling and bereavement support looks like.

EACH Milton is a small unit with 6 inpatient beds. A hydrotherapy pool, music room, multi-sensory room, sensory garden and wheelchair accessible playground help make this a beautifully interactive 'fun' environment for children. Accessing the library and spending time with the "Wellness Team" was an opportunity for gleaning ideas (especially around making memories).

Being able to "talk shop" with those in similar work was inspiring and encouraging as was seeing many things that we do and offer here in South Canterbury happening across the world. I came away with several resources and ideas including a great booklet about "Ducks in a Row".



Master Painters leave us feeling humbled

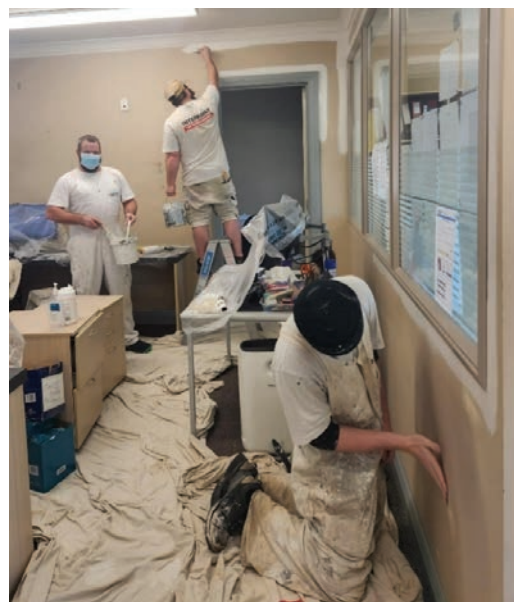
Mid and South Canterbury Master Painters have featured in this newsletter a number of times and deserve to be again for completing a full redecorating of the inpatient unit in August.

This was part two of a project that began the previous winter and followed the painting of the outside of the inpatient unit in 2019 and 2021 and the outside of our Church St shop in 2018. And all for free when otherwise it would have cost us around \$130,000.

Please support these businesses.

The latest project involved Shore Decorating, Waimate Decorating, Nolan Painting, Spraymaster Airless Spray Painting, Interpaint Waimate, Clark Decorating, Ranger Specialist Coatings, I DEK R8 Painting and Decorating, Wolfie's Painting Services, Ashburton Painting and Decorating, Scammell Painting and Decorating, Bradford Painting, Trade Related Decorating, Jeff Allan Paint and Paper, Residential Painting Services, Steve Turnbull Decorating, Lusty Decorating, John Morris Decorating and Grant Jenkins Contracting.

Deborah Still from Deborah Still Interior Design chose the paint colours and wallpaper, also free of charge.



For both the interior and the exterior the paint was provided by Mel Tracy from Resene, while Karen O'Driscoll operated the bbq a few times while the outside was being painted.

Others involved in the 2021 work included Karton Construction Systems for plastering work and Height Solutions for scaffolding.

In 2018, other painters were Binns Property Works Tekapo, Hargrave Decorating and Aidens Painting Services, while the Watty Paint Centre provided the paint there.

At the Master Painters conference this year the local branch was awarded the organisation's national community award, and Guthrie Bowron also announced a donation of \$5000 to hospice at the conference.

A huge thank you to everyone involved. We feel truly humbled.

Photo left: Hospice thanked those involved with an afternoon tea on September 15 when we took the chance of a group photograph on the front steps.



Chair challenge overcome ...

Timaru Upholstery also came to the party when we challenged them with a small problem around the time the painting was being done.

Because our lazyboy chairs in the patients' rooms recline to a flat position there were times newly painted walls were being scratched.

Debbie and Nigel Booth from Timaru Upholstery came and had a look and then went away and made some removable padded covers for the back of the seats. They made seven of these for us free of charge.

Problem solved. And big thanks Deb and Nigel.

Yee haa

It was a liberating if somewhat strange feeling to no longer require mask wearing in the inpatient unit from October 1.

The decision to make mask wearing optional was based on us all learning to live with Covid and the continued vigilance on illnesses of any kind, whether they involve staff or visitors.

Patients are required to be RAT tested before coming to Hospice, but virtually all other measures have been dropped.

After three-and-a-half years it seems strange not be wearing masks, but so much better particularly for nursing staff as patients can now see their smiling faces.

Mad dash for groceries

When Timaru woman Lee Lindbom won a raffle prize that entitled her to a two-minute Grocery Grab from Brown Street Countdown she had no hesitation in donating it to Hospice.

Two of our long-time volunteers Tracey Hutchison and Jill Hinde offered to do the grocery grab on our behalf and in the two minutes amassed far more than the \$500 worth, which Timaru Girls High School topped up.

Thanks Lee (right), Timaru Girls High School and Countdown and to our hard cases Tracey (left) and Jill.



Wow, what a gesture



At Hospice we are often blown away by the generosity of people, and that was certainly the case when new Manager of Volunteering Robyn Horne phoned Kaans catering to get a price list for those times when we cater for events.

After completing the application paperwork, Kaans advised that they would like to sponsor our food expenses up to \$10,000 a year. That's simply amazing! .

Kaans also supports the hospices in Dunedin and Invercargill.



Pictured are Sue and Lyn marking off our first order received. Thanks Kaans

FREEZER DONATED

Thanks to Streets Ice Cream and Neil Gillies (husband of Clinical Nurse Manager Faye) we have been donated a much-needed freezer for use by our cooks.

A former shop freezer for ice cream sales, with its numerous and easy to access baskets it is ideal for us.



By the time this newsletter comes out we would have held our Hospice Harcourts Home and Garden tour for 2023. This is the first time for a couple of years due to Covid and once again we are so indebted to the very generous home and garden owners who agreed to allow their properties to be viewed.

This is a huge amount of work. We are also hugely indebted to all the volunteers who sat at gates and supervised inside the homes.

Tractor anyone?

See this little beauty.



It's a Ferguson TEA, purchased by Hospice volunteer James McIlraith at this year's farm implement sale at Pleasant Point in July.

His thinking, that he could strip down the old girl, give her a new paint job, and then re-auction it for Hospice at next year's sale.

Now, after countless hours of work, the tractor is looking like new, and it's our job now to get the word out.

The plan is to take it to this year's Rock and Hop to show her off, and perhaps even sell it on the Saturday of the event in March.

This is a fantastic gesture by James, and we hope it attracts a good price for all his work and for the benefit of future hospice patients.



Railway show delivers

Hospice has provided volunteers for the door at the biennial Model Railway exhibition at Roncalli College for a number of years now and has been the recipient of profits from the event.

This year though was a record with \$5000 donated, which organiser Andrew Milliken presented in August.

He was delighted, as was GM Pete and Volunteer Manager Robyn.



Calves for Hospice programme



Belgian Blues are very friendly cattle. Meeting for the first time is Marketing and Events Manager Kim Rogers and one of our first calves, with generous farmer Horrie Hollever from Otaio.

Our Calves for Hospice programme started in 2021 and is proving to be a popular way for our local farming community to give back to Hospice South Canterbury. Initially starting out as our Raise a Belgian Blue for Hospice initiative, 2023 saw a name change as we also began receiving other standard cattle breeds into the programme.

This is the first year Hospice has started receiving funds from the programme as our first group of calves are either sold or killed. We received \$3226 in August being the proceeds from 2 of these calves. Hospice South Canterbury is very appreciative to the farmers and owners of the properties grazing our calves for their involvement and support of our programme.

Due to the increase in calves being donated to us towards the end of 2023 we are on the hunt for more owners of properties that are prepared to graze a calf for Hospice. We are aware that grazing a calf comes with a cost and Hospice is more than happy to assist with these expenses. If you think that you could take on a calf to graze and would like more details, please call Kim 027 284 4590 to discuss.

Well done Sheryl

After 19 years as a volunteer breakfast cook Sheryl Maconie has hung up her apron. An amazing contribution Sheryl. She was always willing to fill in when we were short or encountered sickness. She is still happy to volunteer at other events. What a trooper.

GM Peter O'Neill says thanks with a small token of appreciation.





Harlau Art In The Garden

Join us at Harlau House on the evening of the 23rd February (ticketed preview) or the 24th & 25th of February 2024 for an art show like none other. Mike and Maree Hynes are running a terrific fundraiser for Hospice. They will have lots of art on display for purchase over the weekend. Wander the gorgeous grounds of Harlau, enjoy the stunning country environment, and view some of South Canterbury's most talented artists display their works for sale. All funds raised from the event will be donated to Hospice. Mike and Maree are great supporters of Hospice and would like to make this a regular event so come along and support your Hospice and enjoy a local day out.

Look out for tickets to the preview night where you will get canapes, bubbles and first look at the art available, or come along on Saturday or Sunday, make a donation to your Hospice, and enjoy a stroll.

54church thanks generous donors

So we have made it through the winter and a wet one it was indeed.

54 was privileged to be able to stock fabulous men's and children's winter clothes throughout winter but with the warm weather fast approaching we are frantically unpacking our summer stocks so that we can refresh the shop for the new season.

Timaru has been so generous with us, we will have a fabulous selection. That's not the only reason to pay 54church a visit, as brightening up our entrance and welcoming in spring is a beautiful selection of colourful annuals, so if it's a splash of colour your garden needs we can help with that too ... as well the tools ... the pots ... and more.

We have also been working on some changes instore and if you haven't been in recently, do pop in and tell us what you think.

A special shout out to the 54church volunteer team that keeps the shop running smoothly and the Timaru District that keep us well stocked, a winning combo that supports our local Hospice.

Don't forget we have a pick-up and delivery team so if its transport you need we can help.

Noeleen Gillson
Shop Manager



Above left: Clare Rainbow with Sue Dennison, 54's Flower Fairy. Right: Graeme Hanson and Ted Irvine (driving), two of our pick-up boys

Year has flown by at 68orbell

Welcome to 68 Orbell St. Wow, what a year it has been and it has gone by so fast.

Firstly I would like to thank all of our local community for all the amazing donations they have given to us. It has certainly helped keep our shop full and something new to look at every time you enter.

Secondly I would also like to thank my amazing team volunteers here at 68 Orbell who always arrive with a smile on their face and a willingness to take on any task.

The shop would not be the success it is without their contribution. They are rock stars.

When in store be sure to check out new rack space we have created for the curvy girl range from tops, pants and dresses, sizes starting 16-26,

We celebrate Christmas in style here at 68 Orbell where we have decorated our tables with our legendary red, green and gold displays. They are full to the brim with Christmas gift ideas and secret Santa gifts. With a lot more people

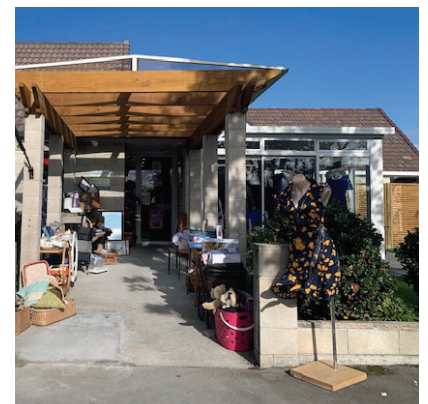
creating upcycled Christmas gifts and recycle Christmas gifts, we are a must visit.

Knowing what a special shop we have, we are taking bookings for night functions aimed at workplaces, clubs and social groups that enjoy an evening out in a relaxed environment among friends and laughter. Please give the shop a call and make a booking phone 688 5165.

Lastly wishing everyone a Merry Christmas and a happy New Year.

Jo Sullivan
Shop Manager

New concrete at 68 Orbell St hospice shop to make entrance larger and give more display space. What a difference!!



Staff comings and goings

Tracy Brosnan

In July we said farewell to Tracy after a year in her role as Office Administrator. After many years working in an office admin role Tracy decided to take a break from work to spend time with family and her first grandchild, who lives in Gore. We wish her all the best in her new role as Nana.



Robyn Horne

Manager of Volunteering

Robyn comes to Hospice with a wealth of experience gained over her working life – office administration, personal assistant, retail, and she has also been a breeding consultant for SRV AmBreed. Added to her bow she also has a new position as the Secretary/Treasurer for the Caroline Bay Association. In her spare time she loves to sew, knit, cook and read.



Angela Rattray

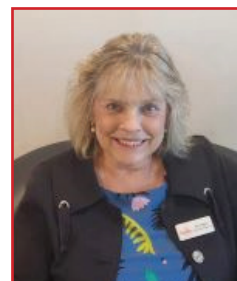
Well known to all especially our many volunteers. After 8 years, Ange decided on a new career challenge. Ange's big smile and cheeky humour is missed at Hospice, morning tea conversations are not quite the same. The YMCA and the Y-Drive Driving School where Ange is now a Driving Instructor will benefit from that quick witt and friendly banter - just what a driving instructor needs, don't you think?



Bronwyn Simmons

Office Administrator

Our Hospice Admin team welcomed Bronwyn in June. Recently arrived from Christchurch Bronwyn has mainly held office administration roles in construction, law and finance. She has bought a home close by and has been working hard on renovations. This summer she is hoping to landscape and plant her garden.



Katie Clark

Katie left Hospice to start a new career at St John Timaru as a EMA (Emergency Management Assistant). We thank her for the care she has given to our patients and families over the past year and wish her well on her new journey.



Lisa Pelesa, Hospice Cook

Lisa joined the Hospice team in August as a Cook, joining resident cook Sue Linwood in a job shared role. Lisa is heavily involved with the Harlequins Rugby Club, where she manages the bar and the many rugby functions, catering for up to 100 rugby boys and supporters.



Taryn Beech

54 Church Street Assistant

Taryn joins Hospice having come from McKenzie & Willis where she worked as an interior consultant. Alongside working at 54 Church Street she also works at the Boiler House – a new bar in town, owned by her brother. She comes from a large family and her spare time is filled with family activities and interior projects.



Jane Culhane

Quality Assurance

Jane comes to Hospice after 20 years as Principal of Waimataitai School. She too brings a wealth of knowledge from her learnings as a teacher and enjoyer of life. Jane likes to be kept busy and in her spare time she enjoys getting creative and crafty.



Many thanks to Gordon Ireland from Fire & Safety Training Timaru for another fire extinguisher training session. Let's hope Lisa doesn't have to use the fire blanket in the unit kitchen. Staff and volunteers enjoyed refreshments in the Cottage afterwards.



We were delighted to be chosen as one of the recipients of proceeds of the sale of the Otaio Hall in August. The hall committee had made the decision to sell the hall as its use diminished, and passed on \$40,000 to Hospice South Canterbury as one of its five chosen charities.

This is a significant donation for which we are most grateful.

Donations from groups and Organisations 1 April to 12 October 2023

MTF Finance Timaru \$2,000 donation for fuel for Hospice vehicle; Mountain View Friendship Group \$664; Clandeboye Rural Fire Brigade \$1,000; Washdyke Indoor Bowls Club \$700; Lions Club of Geraldine Charitable Trust \$1,000; Rotary Club of Timaru North Charitable Trust \$2,000; NZ Sheep Breeders – Ref Pheasants, Suffolk NZ Craigmore \$250; EnviroWaste Services \$334 staff collection; Waimate Whitehorse Lions Club \$500; Mountain View Village Social Club \$523; The Oxford Restaurant – Tree of Life Art Class donation \$2,400; Lions Club of Pleasant Point \$1,000; SC Model Railway Exhibition Group \$5,000; Lake Tekapo Lions Charitable Trust \$1,000; The Four Winds Mahjong Group \$425; Fonterra Co-Operative Group \$686; Carlton Hotel \$2,997; Blackham & Co Real Estate – Harcourts \$5,500; Guthrie Bowron at Master Painters Conference \$5,000; NZ Meat Workers Union – Smithfield \$2,000; LJ Hooker – Enting Real Estate \$500; Timaru District Council Jeans Only Day donation \$515; SPF Website Multimedia \$2,500 (50% discount on Caroline Bay Rock & Hop shopify shop package); Timaru Upholstery \$660 (in kind work for making & installing of 7 lazy boy seat back covers); Kaan's Catering Supplies \$10,000 sponsorship of food for inpatient unit; Menzies Group donation of aluminium and labour for Hospice sign; SC Chamber of Commerce donated fee for training; Aubrey Podiatry donated 38 pairs of brand new shoes retail \$250 per pair; XCM Group donated high viz vests for 54Church St Hospice shop "pick up" team; Plantorama donated 50 "Hospice" roses for sale at our Hospice shops \$2,000.

Grants

Pub Charity \$150,000; Perpetual Guardian – PA Blackmore \$745; Trust Aoraki \$5,000; Community Trust of Mid & South Canterbury donation of course fees for staff to attend SC Chamber of Commerce courses.



Diane, Tara, Lisa, Annette, Catherine & Trine attending recent Conference at Ohau, run by ANZSPM, on Understanding As I Die.

Special Mention

Jeff Domigan \$2,448 busking at supermarkets from May 2023; Anonymous \$1,965 sale of wool via Mulcahy Wool Merchants; Mary Phillips \$2,000 towards new fridge freezer for inpatient kitchen; Stephanie Dore \$1,000; Joy Moke \$8,000; Grace & Joseph Wells Givealittle donation from running a marathon \$3,166 in memory of their nanny (grandmother); Shayne Broughton \$180 trailer hire for Hospice; Nicky & Blair Cartwright \$300 go kart fundraiser on their farm; The Learning Barn donation from yellow dress up day \$150; Farming for Hospice donation of Belgian Blue cattle sold \$3,226; Anne MacKay donation of 48 rolls toilet paper every 6 weeks; Ken & Jude McKenzie donation of cartons of toilet paper every 18 weeks; Lee Lindbom donated \$500 grocery grab at Countdown won in a raffle & Timaru Girls High School topped up difference because grabbed too much!; Farmers donation of mannequins for 68 Orbell St Hospice shop; Airy Fairy NZ donated bunches of balloon flowers; Good Bitches baking fortnightly donation of baked goodies for family lounges. Corporate Print for their continued support in so many ways.

THANK YOU

To all the businesses who support Hospice by displaying donation boxes on their counters – Ballance Fertiliser, Ballantynes Café, Benny's Again restaurant, Bread Basket, BP Highfield, Estate Food Bar Washdyke, Fast Food Factory, Grindhouse Café, King Street Takeaways, Harlau House, Morgans Road Food Market, Morgans Road Takeaways, Moyles Pharmacy, Murrays Barber shop, Punjab restaurant, Village Inn Café Highfield Mall, Bay Hill Bar & Restaurant, Murray's barber Shop, Sopheze Stafford Street, Zest, Z Caroline, Tangles Hair Design Temuka, Tangles Village Café Highfield Mall, Washdyke Night & Day, Zest, Z Caroline Bay. We have received \$4,017 from the start of 2023 so huge thank you to these businesses.

Special thanks to home owners for opening their beautiful homes and gardens for the Hospice Harcourts Home & Garden Tour – Jo Shore, Gail & Bill Seyb; Mary & Warwick McSherry, Kathryn & Mark Beynon, Margaret Macaulay, Clare Bryan, Georgia & James Jackson, Levien & Monique van Vugt, Roseann Couling.



The Hospice staff crew on the Friday of Jeans Only Day. Great effort team.

Heath a hit

An aspect of our care here at Hospice is that we try to make the facility feel as much like a person's home as possible, and a part of that is having a Hospice cat.

A big part.

Heath has been with us for a year now, and his impact with some patients and families is profound.

He has a knack of knowing who appreciates his company and who doesn't, and for those who do in typical cat fashion he lords over them, and they don't mind.

Two recent examples involve a patient asleep on the very edge of the bed and Heath sprawled out on the sheets with plenty of room, and another where Heath had the whole bed and the patient was having breakfast on the bedside chair.

Yet the patients wouldn't have it any other way.

He's even been getting his own mail.

This, also recently: "Dear Heath, I am writing to ask if you could please convey to your staff ... my thanks for looking after me while I was with you in Hospice. You have been a very accommodating Top Cat. I am all the better for knowing you and your extensive staff."

And another: "The cat was her (the patient's) lifeline so to speak, if he was not there and no one else was she would call for it to be stroked and loved."

Heath also attaches himself to visitors, recently being a great support to a nine-year-old son of a patient.

A very special staff member.



Heath dressed up for Jeans Only Day. Fair to say he wasn't best pleased, far preferring to be pampered by patients.

Yes! I would like to support the work of Hospice South Canterbury.

Donation \$

Online banking donations, see below, or; visit website www.hospicesc.org.nz, click Support Us

Friends of Hospice Annual Subscription (\$20 per person).

I would like to receive information regarding leaving a bequest in my Will.

I am interested in learning more about becoming a Volunteer

I would like to know more about making a regular donation

Name

Email

Address

Phone

My credit card number is

Please circle VISA Mastercard Exp Date /

Cardholder Name

Signature

As a security measure our admin staff will call you for your CVV number.

Eftpos Swipe your eftpos card or drop off cash at our reception during office hours.

Online Banking:

We gratefully accept direct donations to our account **03 0887 0348568 00** and ask that you include your name as a reference and use the code **NL09**.

We need to receipt your donation so can you please fill in the form above or email your name, address and amount donated to support@hospicesc.org.nz (or phone us on 03 6877670 ext 0) and we will send one out.

Scan the QR code to make an online donation



Names and addresses are held in accordance with the Privacy Act 1993 and are only used for Hospice South Canterbury purposes. If you do not wish to be kept informed about the work of the Hospice South Canterbury please contact the office, ph 03 687 7670.

Email my newsletter

As postage rates continue to rise we are keen to distribute as many of our twice-yearly newsletters via email. If this suits you as an option could you please email support@hospicesc.org.nz with a quick line saying you would prefer this in future, adding your name so we know we have the right person.

Thank you for your continued interest in activities at Your Hospice.



Our Virtual Coffee Club continues to percolate nicely with more than 100 members. This fairly painless way to donate to Your Hospice now raises more than \$20,000 a year.

The idea is you contribute \$5 a week (the equivalent of a cup of coffee) or \$20 a month via internet or phone banking. This all adds up to a significant sum that is spent on the care and support of local people and families.

If you would like to join, set up a regular payment to our bank account 03 0887 0348568 00 and then contact us via email (support@hospicesc.org.nz) or phone 03 687 7670 so we know who you are.

There's even real coffee involved when we invite you to join us for an update on where your money is going.

WISHLIST

We would be grateful for donations of any of the items below:

Jelly, Tinned Peaches, Biscuits, New World Vouchers, Couplands Vouchers, Instant Pudding, Tissues, 9v Evolta Batteries, Laundry Powder, Baby Wipes, Body Wash, Moisturiser, Janola, Glade Air Freshner, Toothbrushes, Coffee Mugs for Lounges, Wine Glasses for Lounges, Dishwasher Tablets, White Serviettes.